

EAD and Its Implications in an M.ICT Graduate's Early Career



Richard Wenchao He, M.ICT (*UoW*)

Education and Multimedia Design Coordinator

Westmead Hospital (a teaching hospital of University of Sydney)

1 April 2010

About Me



- **IT-Related Education**

- 2007-2008 : Master of Learning Science and Technology, University of Sydney
- 2008-2009: Master of Information and Communication Technology, University of Wollongong

About Me



- **IT-Related Work**

- 2008: Coordinator for the E-learning Pilot Project at Linguaphone Group
- 2008: User Acceptance Tester for the WebCT Upgrade Project at University of Wollongong
- 2009: Research Assistant for the E-Learning Evaluation Research Project at University of New South Wales
- 2008-2010: Scholarly Repository Officer for the ERA Project at University of Sydney
- 2010-2011: Coordinator for the Online Anxiety Disorders Training Project at Westmead Hospital

About Me



- **IT-Related Work**

- 2008: Coordinator for the E-learning Pilot Project at Linguaphone Group
- 2008: User Acceptance Tester for the WebCT Upgrade Project at University of Wollongong
- 2009: Research Assistant for the E-Learning Evaluation Research Project at University of New South Wales
- 2008-2010: Scholarly Repository Officer for the ERA Project at University of Sydney
- 2010-2011: Coordinator for the Online Anxiety Disorders Training Project at Westmead Hospital



EAD

Applying EAD Concepts to IT-Related Jobs



- **E-Learning Evaluation**
 - Too many e-learning products promoted to the University
 - Wrong purchase decisions → some e-learning products are not as good as expected
 - Pre-evaluation & Post-evaluation → better decision making
 - Three Evaluation Layers:
 - ✦ Pedagogical Layer
 - ✦ Technical Layer
 - ✦ Business Layer

Applying EAD Concepts to IT-Related Jobs



- **ERA (Excellent in Research Australia) Reporting**
 - **Too many people and departments involved:**
 - ✦ **Current/Previous Academic Staff**
 - ✦ **Current/Previous Research Students**
 - ✦ **Faculties/Schools/Research Centres**
 - ✦ **Research Office**
 - ✦ **Library Electronic Scholarly Repository**
 - ✦ **Library Document Delivery Service (Inter-Library Loan)**
 - ✦ **Library Loan Service**
 - ✦ **Publishers**
 - ✦ **Reviewers from the Government**

Applying EAD Concepts to IT-Related Jobs



- **ERA (Excellent in Research Australia) Reporting**
 - **Complicated Tasks:**
 - ✦ Collect bibliographic information from authors (creating records)
 - ✦ Verify the information (editing the records)
 - ✦ Classify the publications (editing the records)
 - ✦ Obtain the copies/scans from publishers (editing the records)
 - **Complicated Processes:**
 - ✦ Research Office assigns tasks to Repository
 - ✦ Repository assigns tasks to Document Delivery Service
 - ✦ Research Office also assigns tasks to Document Delivery Service
 - ✦ Repository contacts the authors
 - ✦ Research Office also contacts the authors

Applying EAD Concepts to IT-Related Jobs



- **ERA (Excellent in Research Australia) Reporting**
 - **Problems:**
 - ✦ Research Office scans the books using non-professional software and hardware
 - ✦ Repository processes the records again using professional software and hardware
 - ✦ Research Office assigns overlapped tasks to Repository over time.
 - ✦ Within the Repository Team, different members may be doing the same records and compete for Interlibrary loan resources.
 - **EAD-based Solutions:**
 - ✦ Changed the system
 - ✦ Using Notes
 - ✦ Changed the scan process – individual work → streamlined team work
 - ✦ Only Research Office contacts authors

Applying EAD Concepts to IT-Related Jobs

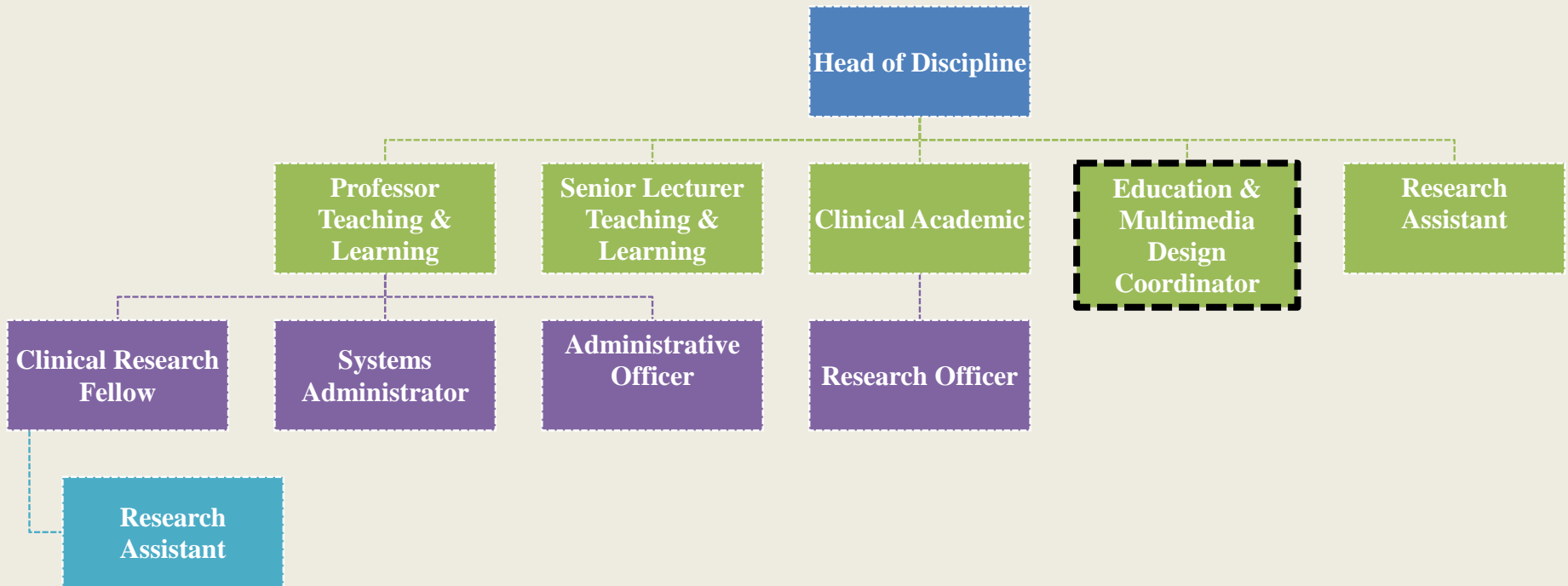


- **Online Educational Program**
 - **Limited Resources at the Initialisation Stage**
 - ✦ Limited Personnel & Equipments
 - ✦ No Existing Framework
 - **Modelling**
 - ✦ **Data** – Course Materials in various formats
 - ✦ **Function** – Administrative Activities and Instructional Activities
 - ✦ **Network** – Learning Management System, Student Administration System, Library Services, etc.
 - ✦ **People** – Course Designers, Subject Matter Experts, Administrators, Students, Librarians, Actors/Actresses
 - ✦ **Time** – Schedules for Development, Implementation and Review
 - ✦ **Motivation** – Get people to learn Anxiety Disorders & create revenue

Applying EAD Concepts to IT-Related Jobs



- **Online Educational Program Development**



Real-World EAD Problems



- **What if your boss disagrees with your EAD thoughts?**
- **What if you have to work in a bad EAD environment?**
- **What if you have a chance to design a small new part within an existing enterprise architecture?**

EAD skills in Job Hunting



- **Interview Questions:**

- The development and support person/team will leave after one year, how can other staff continue to maintain the service?
- What equipments do you need for the project, and how would you use them?
- After we implemented a software solution in our organisation, we found that the users were not satisfied. What would the reasons be?
- How would you deal with multiple competing tasks? (Don't just say you will give the more important tasks priority)

Question Time



- Question?

End



- Thank you!
- My E-mail: wenchao.he@sydney.edu.au
- My Blog: www.hewenchao.com